

# uPVC PLUMBING SYSTEMS



\*Except brass fittings

## CHOOSE LEAD-FREE. LIVE CAREFREE.

Corrosion -resistant uPVC pipes and fittings for safe drinking water.



### PIPES

Sch 40 & 80  
As per ASTM D - 1785 (Plain Ended).

### FITTINGS

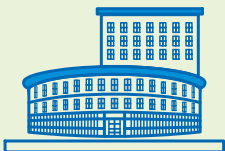
15 to 150mm- Sch 40 as per ASTM D - 2466.  
15 to 100mm- Sch 80 as per ASTM D - 2467.

### PRODUCT RANGE

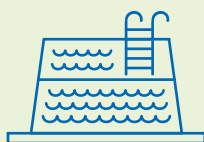
Pipes: 15mm to 250mm (1/2" to 10")  
Fittings: 15mm to 150mm (1/2" to 6")



### EXTENSIVELY USED IN



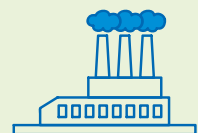
COMMERCIAL



SWIMMING POOLS



RESIDENTIAL



INDUSTRY

## APPLICATIONS

- Indoor and outdoor installations of cold water plumbing lines.
- Residential complexes & commercial buildings.
- Public utilities & swimming pools.
- RO & DM water plants.
- For concealed, down take and terrace looping.

## MAJOR ADVANTAGES

- Lead-free material ensures safe drinking water.
- Exceptional corrosion resistance ensures constant flow over its lifetime.
- Lightweight but strong.
- Self-extinguishing (Does not support combustion)
- High impact resistance. Ensures high quality performance at lower temperatures.
- Fast and easy installation.
- Long life.

## JOINTING METHOD

- Solvent Joint
- Threaded Joint: Plastic & metal threaded fittings to be used for transition joints.

## PIPE DIMENSIONS

Pressure for Pipes (Solvent Weld) at 23°C						
Nominal Bore		Outside Diameter (mm)	Schedule 40		Schedule 80	
(mm)	(inch)		Wall Thickness (mm)	Working Pressure Kg/cm <sup>2</sup>	Wall Thickness (mm)	Working Pressure Kg/cm <sup>2</sup>
15	1/2	21.34 ± 0.10	2.77 + 0.51	42.20	3.73 + 0.51	59.75
20	3/4	26.67 ± 0.10	2.87 + 0.51	33.75	3.91 + 0.51	48.50
25	1	33.40 ± 0.13	3.38 + 0.51	31.60	4.55 + 0.53	44.25
32	1 1/4	42.16 ± 0.13	3.56 + 0.51	26.00	4.85 + 0.58	36.60
40	1 1/2	48.26 ± 0.15	3.68 + 0.51	23.25	5.08 + 0.61	33.00
50	2	60.32 ± 0.15	3.91 + 0.51	19.65	5.54 + 0.66	28.10
65	2 1/2	73.02 ± 0.18	5.16 + 0.61	21.10	7.01 + 0.84	29.55
80	3	88.90 ± 0.20	5.49 + 0.66	18.25	7.62 + 0.91	26.00
100	4	114.30 ± 0.23	6.02 + 0.71	15.50	8.56 + 1.02	22.50
150	6	168.28 ± 0.28	7.11 + 0.86	12.60	10.97 + 1.32	19.65
200	8	219.10 ± 0.38	8.18 + 0.99	11.20	12.70 + 1.52	17.50
250	10	273 ± 0.38	9.27 + 1.12	9.90	15.06 + 1.80	16.20

### Note:

- For threaded pipes & fittings, the working pressure at 23°C shall be considered as 50% rating.
- Pressure rating at uPVC pipes & fittings is temperature related. Derating factor shall be applied for applications at higher temperatures.

Working pressure for Fittings (Solvent Weld) at 23°C			
		Schedule 40	Schedule 80
Nominal Bore		Working Pressure	
(mm)	(inch)	Kg/cm <sup>2</sup>	Kg/cm <sup>2</sup>
15	1/2	25.30	35.85
20	3/4	20.25	29.10
25	1	18.95	26.55
32	1 1/4	15.60	21.95
40	1 1/2	13.95	19.80

Working pressure for Fittings (Solvent Weld) at 23°C			
		Schedule 40	Schedule 80
Nominal Bore		Working Pressure	
(mm)	(inch)	Kg/cm <sup>2</sup>	Kg/cm <sup>2</sup>
50	2	11.75	16.85
65	2 1/2	-	17.70
80	3	-	15.60
100	4	-	13.50
150	6	7.50	-

**Note:** Working pressure for metal insert fittings is 15Kg/cm<sup>2</sup>

## FITTINGS RANGE

### BALL VALVES (SCH 80)



15 to 50mm  
(1/2" to 2")

### BLIND FLANGE (SCH 40)



65 & 100mm  
(2 1/2" & 4")

### COUPLER (SCH 40)



150mm  
(6")

### COUPLER (SCH 80)



15 to 100mm  
(1/2" to 4")

### CROSS OVER



15 to 25mm  
(1/2" to 1")

### ELBOW (SCH 40)



150mm  
(6")

### ELBOW (SCH 80)



15 to 100mm  
(1/2" to 4")

### ELBOW 45° (SCH 80)



15 to 50mm  
(1/2" to 2")

### EQUAL TEE (SCH 40)



150mm  
(6")

### EQUAL TEE (SCH 80)



15 to 100mm  
(1/2" to 4")

### END CAP (SCH 40)



150mm  
(6")

### END CAP (SCH 80)



15 to 100mm  
(1/2" to 4")

### FABRICATED BEND (SCH 40)



15 to 50mm  
(1/2" to 2")

### FEMALE THREADED ADAPTOR (SCH 80)



15 to 100mm  
(1/2" to 4")

### FOUR WAY TEE (SCH 80)



15mm  
(1/2")

### MALE THREADED ADAPTOR (SCH 80)



15 to 100mm  
(1/2" to 4")

### OPEN FLANGE (SCH 40)



25 to 100mm  
(1" to 4")

### REDUCER (SCH 40)



100 X 50mm & 100 X 80mm  
(4" x 2" & 4" x 3")

### REDUCER (SCH 80)



25 X 15mm to 50 X 65mm  
(1" x 1/2" to 2" x 1 1/2")

### REDUCING BUSH (SCH 80)



20 X 15mm to 50 X 40mm  
(3/4" x 1/2" to 2" x 1 1/2")

**REDUCING BUSH (SCH 40)**



150 X 80mm to 150 X 100mm  
(6" X 3" to 6" X 4")

**REDUCING TEE (SCH 80)**



20 X 15mm to 80 X 65mm  
(3/4" X 1/2" to 3" X 2 1/2")

**REDUCING MALE  
THREADED ADAPTOR**



20 X 15mm to 25 X 20mm  
(3/4" X 1/2" to 1" X 3/4")

**TANK CONNECTOR  
MOULDED (SHORT BODY)  
(SCH 80)**



15 to 50mm (1/2" to 2")

**TANK CONNECTOR**



20 & 25mm  
(3/4" & 1")

**UNION (SCH 80)**



15 to 50mm  
(1/2" to 2")

**FEMALE THREADED ADAPTOR  
(SCH 80) (BRASS INSERT)**



15 to 50mm  
(1/2" to 2")

**FEMALE THREADED TEE  
(SCH 80) (BRASS INSERT)**



20 X 15mm to 25 X 15mm  
(3/4" X 1/2" to 1" X 1/2")

**MALE THREADED ADAPTOR  
(SCH 80) (BRASS INSERT)**



15 to 50mm  
(1/2" to 2")

**REDUCING MALE THREADED  
ADAPTOR (BRASS INSERT)**



20 X 15mm  
(3/4" X 1/2")

**FEMALE THREADED ELBOW  
(BRASS INSERT)**



15mm to 25 X 15mm  
(1/2" to 1" X 1/2")

**TIN  
(SCH 80)**



50ml to 1000ml

**TUBE  
(SCH 80)**



25ml & 50ml

Images shown here are for representation purpose only, actual product may vary.